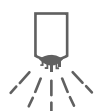




You can rely on us to find a solution
adapted to your environment



R 2500

**HOT WATER
PAVEMENT CLEANER
WITH SUCTION**

Thanks to its combined
system of hot water, high
pressure and suction, it
performs deep cleaning
of your paved areas.
More than ever with the
R 2500
Make your City shine!



Sydney Olympic Park

What is the CMAR R 2500?

The R 2500 is a hot water and high pressure combination cleaner equipped with a world first re- suction system.

It is the benchmark on the compact street washer market, the re-suction system absorbs all the water and dirt scoured by the combination of high pressure and hot water leaving your surfaces spotless in one single passage.

- Combines hot water at 80 degrees and pressure at 280 bars to restore paved areas
- Resuction system cleans everything in single passage



Click below to watch video demonstration



Advantages



Reliability

Fitted with the latest CMAR technology and know-how providing exceptional ecological (water savings) performance



Low Emissions

Environmental protection via limiting pollution and absorbing hydrocarbons. Euro 6 engine = low emissions and low sound (85dB at 15m)



Ergonomic

Extremely comfortable and safe for the operator with all controls and displays at your finger tips.



Performance

Use of hot water and high pressure combination at 280 bars/4000 PSI delivers results without any chemicals



Highly economical

Economical cleaning machine with 50% energy savings thanks to the use of a single boiler and 30% water savings thanks to single run with no rinsing.



Build quality

Built in France using only high quality components from manufacturers such as Bosch. Stainless steel parts ensure no corrosion and machine longevity

High Performance

A world first re-suction system

The re-suction system allows for one passage cleaning meaning you don't have to go back over your work. The hot water cleans up to 4000 PSI at 30 L / per minute making it very fast and efficient. The deep cleaning results in your surfaces regaining their original colour and natural grip.

Basic configuration:

- Cleaning bell with two high performance rotating joints
- The bell rests on 4 castors, which provides regular cleaning regardless of the geometry of the ground
- Working width of 1200 mm
- Volumetric flow rate: 5400 m³/h
- Differential pressure: 13 000 Pa



Hot water: 80 degrees
Pressure: 280 bars
Water Flow: 30L per minute



Sydney Olympic Park
restoring paved
areas back to
original colour

Operator environment

Extremely ergonomic and comfortable. Inside the spacious cabin the operator has full control with everything at their fingertips. Easy-to-see large panoramic view of the work area and latest generation display it all adds up to better safety, more comfort and stress-free working.

- 2-seater cabin with high comfort suspended and adjustable seats
- Insulated tinting glass, with defrosted side mirrors
- Control lights for: Direction, engine oil pressure, hand brake, water cooling, air filter, oil control etc.
- Complies with all safety regulations with rear fog lamp and reversing light LED rear lights
- Panoramic glazing for optimal view of your tools and work area
- On board computer, displays everything from coolant temperature to the daily and total mileage etc.
- Working lights on top of the windscreen for better view on the working area
- Heavy-duty 2-speed ventilation unit for comfortable working conditions



Everything you need inside

User has complete control inside the cabin with Latest generation 7" TFT digital display which shows everything

Ease of use

Easy to see panoramic view of inside cabin and outside work area. Everything at operators fingertips including multipurpose joystick

Unsurpassed comfort

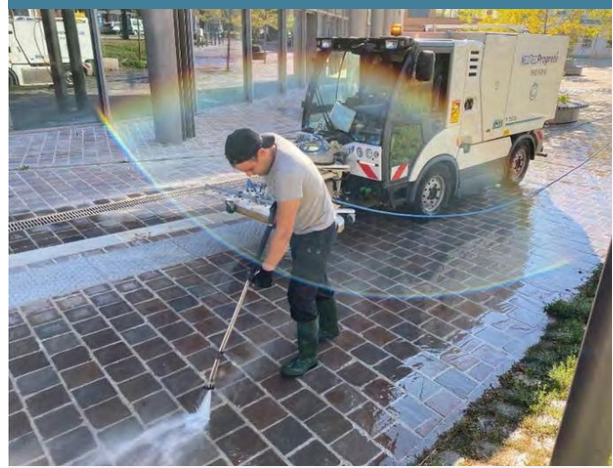
2 comfortable seats with very good suspension Includes height, back and position adjustment

Attachments



CC Cleaning dome

The CC 600 is a detachable handheld scouring dome using either the high pressure of hot or cold water for use in hard to reach areas and zones.



Nozzle

1m High Pressure spray lance with twin jets perfect for chewing gum.



CC 660 being used at a warehouse in Adelaide



HOT WATER PAVEMENT CLEANER
WITH SUCTION

R 2500

ERGONOMICS

- Cab mounted on shock absorbers,
- Panoramic view of your tools and your work area,
- Insulated tinted windows and air conditioning,
- 2-seater cabin with high comfort suspended and adjustable seats,
- Colour reversing camera,
- Latest generation 7" TFT digital display.



AGILITY

- Hydrostatic compact carrier,
- 4-wheel drive, 4-wheel steering,
- Rear steering shaft with possibility of crab or circle driving,
- Hydraulic power steering,
- Height of 2 m possible ($\pm 1\%$) to access underground parking.



CLEANING AND SUCTION

R 2500 cleaning bell

- Cleaning bell equipped with high performance rotating joints,
- Working width: 1.20 m,
- Hot water cleaning up to 280 bars,
- Left and right hydraulic offset,
- Suction socket integrated with the cleaning bell.



PERFORMANCE

Compact truck with hydrostatic transmission and 4-wheel drive and steering, giving outstanding ecological (water savings and no chemicals used) and economic (low fuel consumption) performances.

- GVWR: 5000 kg
- L 5400 mm – W 1350 mm – H 2170 mm



EQUIPMENT

▲ Boiler

- 50% energy savings thanks to a single boiler,
- Temperature up to 80°C.



▲ Stainless steel tanks

- Clean water: 1150 litres
- Dirty water: 1100 litres



▲ Spray gun for finishing work



▲ Ease of draining



EFFICIENCY

CC 600 cleaning dome

- Fitted on the front side of the vehicle to facilitate transport,
- Manual operation at 280 bars for places difficult to access to.



- Dry floor after operation,
- 30% water savings thanks to a single operation without rinsing,
- Paved areas and other road supports retain their original colour and natural grip.



Book your demonstration today.

Thanks for your interest in the CMAR R 2500 hot water cleaner with suction. Please call or email us to arrange a suitable time and date for your on-site demonstration.



WA, NSW, SA, QLD, NZ



1800 018 498



epsales@enviropath.com.au



City of Parramatta receiving their new R 2500



TECHNICAL INFORMATION

Carrier

Chassis	M 29 Compact carrier with hydrostatic drive, 4-wheel drive and 4-wheel steering
Engine Power	Euro VI with direct injection, Power: 80 KW - 110 H.P.; 2600 rpm Cylinder capacity: 2970 cm ³
Tranverse Speed	0 - 25 km / h
Working Speed	0 - 12 km / h
Cab	2-seater panoramic cabin with high comfort suspended seats
Suspension	With helical springs and telescopic shock absorbers
Braking	Hydraulic servo brake Dual circuit braking on front and rear wheels with ABS
Front panel	Ventilated disk brakes

Cleaning and suction equipment

Tank	Stainless steel design with 2 compartments Capacity: Clean water 1150 litres Dirty water 1100 litres
Boiler	Stainless steel coil Temperature up to 80°C
Hot water high pressure circuit	280 bars - 30 l/min, for cleaning functions
Cleaning bell R 2500	Equipped with 2 high performance rotating joints Working width: 1.20 m Left and right hydraulic offset
Suction Turbine	Volumetric flow rate: 5400 m ³ /h Total differential pressure: 13 000 Pa

